

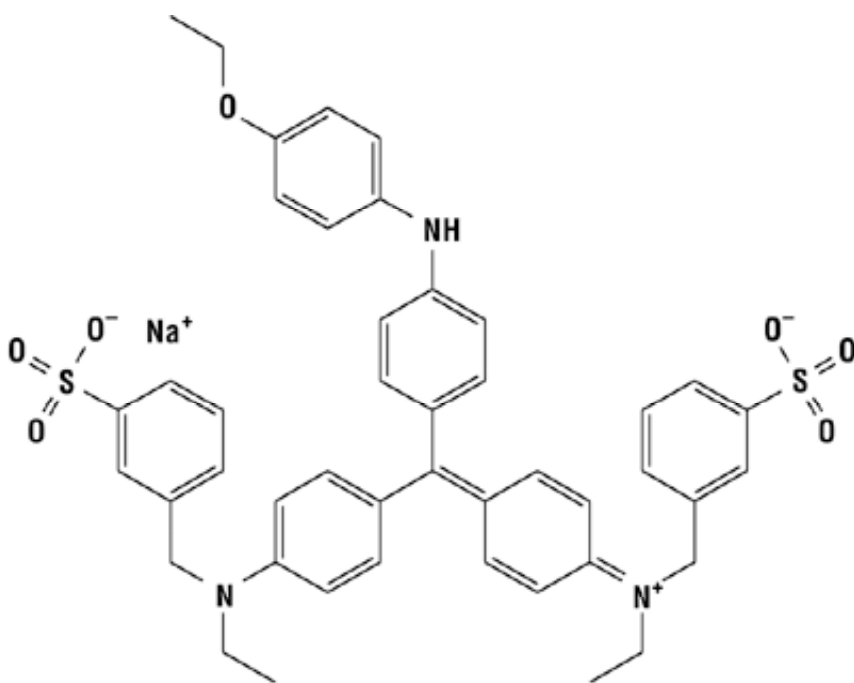
## Coomassie Staining of Acrylamide gels

Dissolve 2.5g coomassie brilliant blue R-250 (BioRad #161-0400) in 450mL MeOH. (it will take some time to dissolve, may want to stir overnight)

Then add 450mL H<sub>2</sub>O and 100mL glacial acetic acid. Filter the mix with whatman paper (this will take some time).

Stain gel with coomassie mix for 1-2h. Then destain overnight with destain mix [45%MeOH, 45% H<sub>2</sub>O, 10% Acetic acid]. Put a chimwipe in the destain to absorb the dye from the destain.

After destaining rehydrate gel with DI water for 10-30min or longer.



**Coomassie Brilliant Blue R-250 Dye**  
M.W. 825.97

## Fast Coomassie Staining: Microwave Method

1. Add Fix to cover gel & microwave 1min.
2. Add Stain/Destain to cover gel & 1.5mL Coomassie Blue Stain.
3. Microwave 1min.
4. Shake for ~3min or until you can see bands under white light.
5. Use Stain/Destain solution to destain as needed. (add some kimwipes to soak up coomassie)

### Coomassie Blue Stain:

for 250mL

50% EtOH

125mL, 100% EtOH

0.25% Coomassie R250

0.625g

dH<sub>2</sub>O

100mL

--- mix, then add

10% acetic acid

25mL, glacial acetic acid

### Fix:

for 500mL

50% EtOH

250mL, 100% EtOH

7% acetic acid

35mL, glacial acetic acid

dH<sub>2</sub>O

215mL

### Stain/Destain:

for 500mL

5% EtOH

25mL, 100% EtOH

7.5% acetic acid

37.5mL, glacial acetic acid

dH<sub>2</sub>O

437.5mL